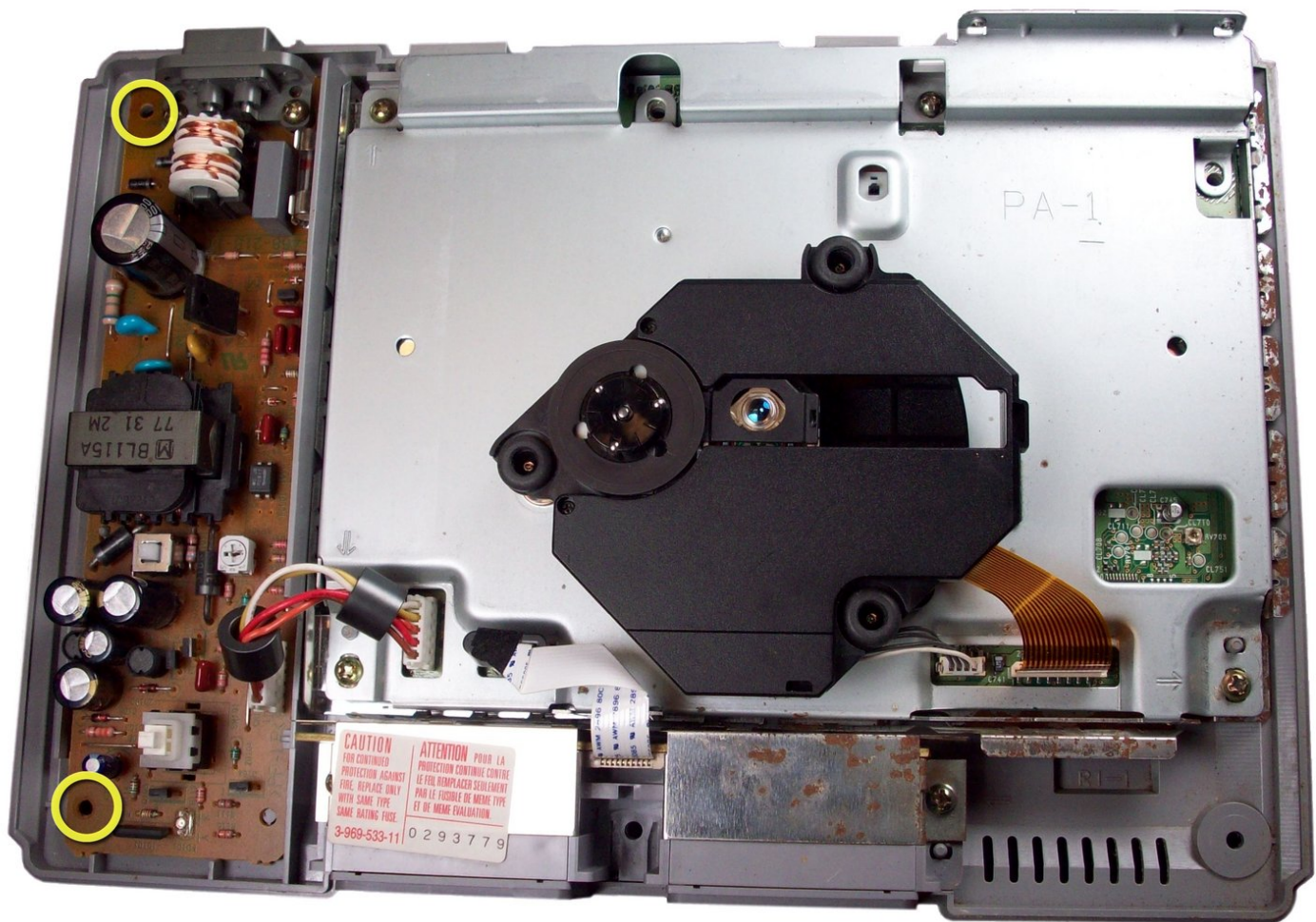




PlayStation Power Supply Replacement

Written By: JakeDeschamps



INTRODUCTION

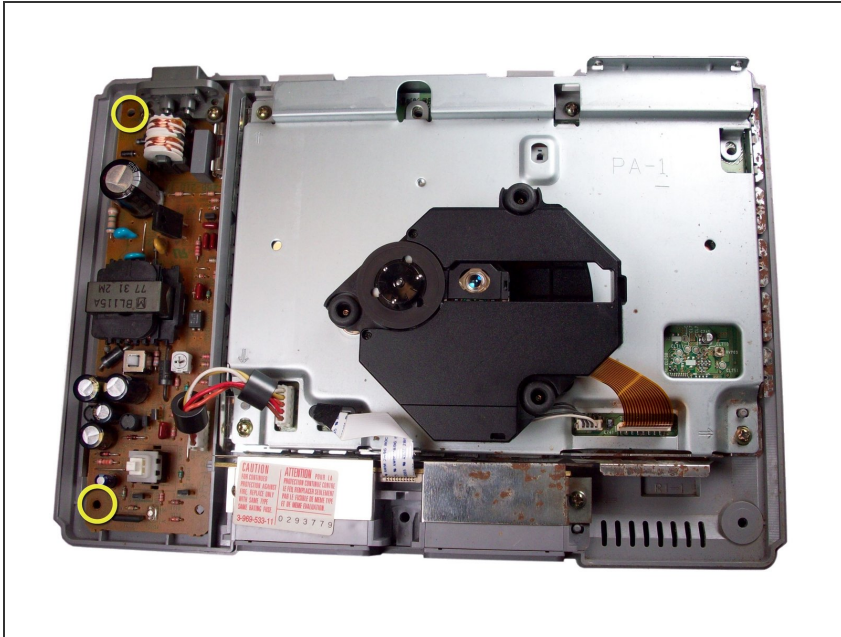
This will guide you through the replacement of your Power Supply.



TOOLS:

- [Phillips #1 Screwdriver](#) (1)
-

Step 1 — Power Supply



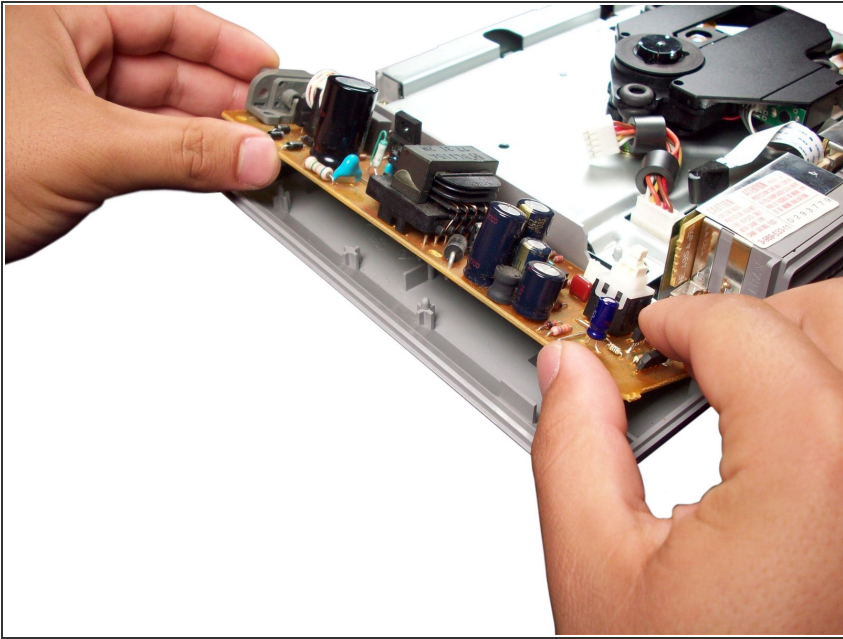
- Remove the two screws securing the power supply to the console.

Step 2



- Detach the connector from the power supply.

Step 3



- Lift up the left side of the power supply. Slide it to the left to remove it.

To reassemble your device, follow these instructions in reverse order.